

Arlington Anglers

More than Just a Depth Finder



Bob Diebold Arlington Anglers Fishing Club

Over the last twenty years, advances in marine electronics have been mind-boggling. Our green box flashers were around for years. We moved into paper chart recorders that ate rolls of expensive paper. With the advent of micro-processors, solid state memory, and new higher resolution screens, the sky was the limit.

At our March Meeting, Mark O'Neill described the sonar capabilities and offered some ways to get more out of our fish finders:

Why Do Fish Show as Arches?: As the boat moves or the fish swim by, the distance from the transducer increases/decreases. A faster speed will spread out arches to a straight line.

Sensitivity: Sensitivity changes the way echoes are displayed, not a change in power. Sensitivity changes for different units, depths, and clarity of water. The proper setting will display all three colors on the bottom. The latest sonar units don't need adjustments. Leave it on AUTO.

Transducers: They need to be mounted parallel to the lake bottom when you are in the boat, on the water (not when on the trailer). Mount it on the starboard side for less prop interference. Different transducers for different applications: 200 khz. for shallow water, 83 khz. for multi-use, 50 khz. for very deep lakes or ocean use.

Way Points: Waypoints are really the lat/long of a specific point. Waypoints are saved on the sonar memory, not the map. Waypoints can be used to mark fish, structure, hazard-

ous rocks, or the harbor mouth. **Trails:** Trails are where you have been. They can be used to retrace your trolling path, navigate around hazards, etc. Don't accumulate too many trails from numerous outings as they will slow down the sonar unit operation.

Latest Features: We now can get side view, down view, 3D imaging, detailed maps, GPS, and networking to tie various systems in your boat (battery monitoring, gas consumption, trolling motor control, etc.).

Last Thoughts: Do NOT use your Fish ID feature. Coat all electrical connections on the boat with dielectric grease.

Mark O'Neill is a Marine Electronics Educator (structure-fishing.com) and on the Pro Staff for Doctor Sonar, Lowrance and Navionics. His next classes will be at Cabela's in Hoffman Estates on 4/6 and 4/20.



Marine Electronics Pro Staff, Mark O'Neill share his fish finder knowledge with the Arlington Anglers.
PHOTO BY: ARLINGTON ANGLERS

April is a great time to seek out and try out a new club after you hit the big fishing shows. You have a no-risk opportunity to see first hand what a club can do for you. Attend Arlington Angler's next meeting on April 16th. **Our speaker will be Mark Kubal, The Doctor of Fishingology.** This seminar will explore Lake Michigan

Spring Tactics for Salmon, Trout, and Perch.

Thanks to all the people that stopped by our booth at the RM Fishing Flea Market and Cabela's Outdoor Expo. We raffled a guided fishing trip compliments of Pat Harrison Outdoors that was won by Kelley McClure. We also raffled a Quantum rod and reel that was won by Tom O'Neill. Prizes will be awarded at the April meeting.

Dates to remember:

Apr 13 Outing – Bangs Lake

Apr 16 - Meeting

Speaker Mark Kubal on Lake Michigan Salmon and Perch Tactics

Apr 20 = Outing Lake Delavan
County Park Boat Launch

Apr 25-28 - Outing Lake Shelbyville

Okaw Bluff Group Site

Apr 30 - May 3 – Outing Lake Erie
Walleye and Perch Charter

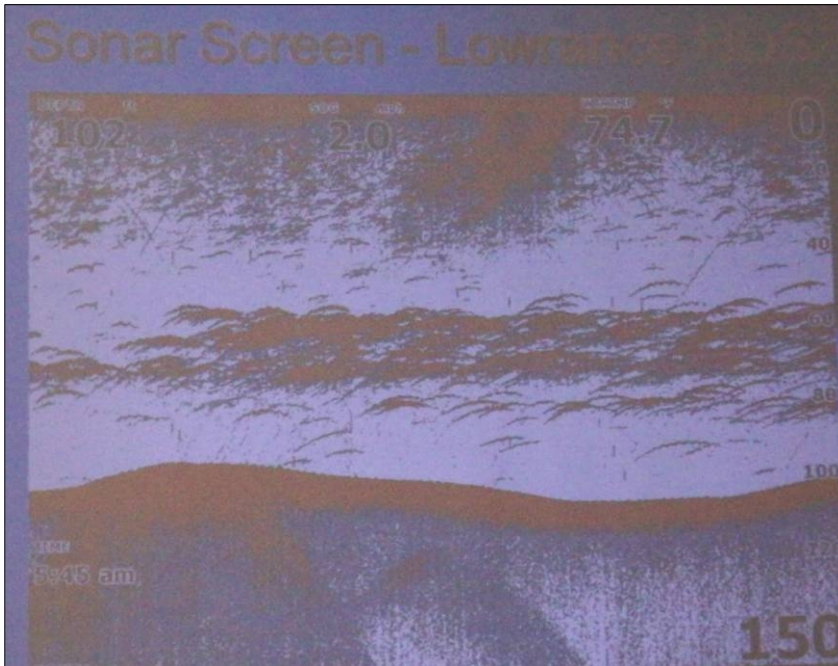
Come to one of our meetings to find out more about our club, activities, and outings. Meetings are held on the third Tuesday of every month from 6:30 to 9:00 PM. **Please note the time change.**

We meet at Cabela's which is located at 5225 Prairie Stone Pkwy, Hoffman Estates, IL just off I-90 at Illinois Rt. 59. Door prizes, speaker, raffles, fishing reports: Give it a try!

For further information call our President Tom Curtin at: 847-639-7858 or visit our website at <http://www.arlingtonanglers.com>

Arlington Anglers

More than Just a Depth Finder



Mark O'Neill can tell a lot from this sonar photo: Mark notes a school of larger lake trout in 102 feet of water, down about 65 feet. The trout are feeding on smaller ciscoes just above in the water column.

There is a thermo-cline at about 35 feet down.

PHOTO BY: ARLINGTON ANGLERS



Pat Harrison, Don Taylor, and Ronda Taylor patrol the new Arlington Anglers Booth at Cabela's Outdoor Exposition.

PHOTO BY: ARLINGTON ANGLERS